



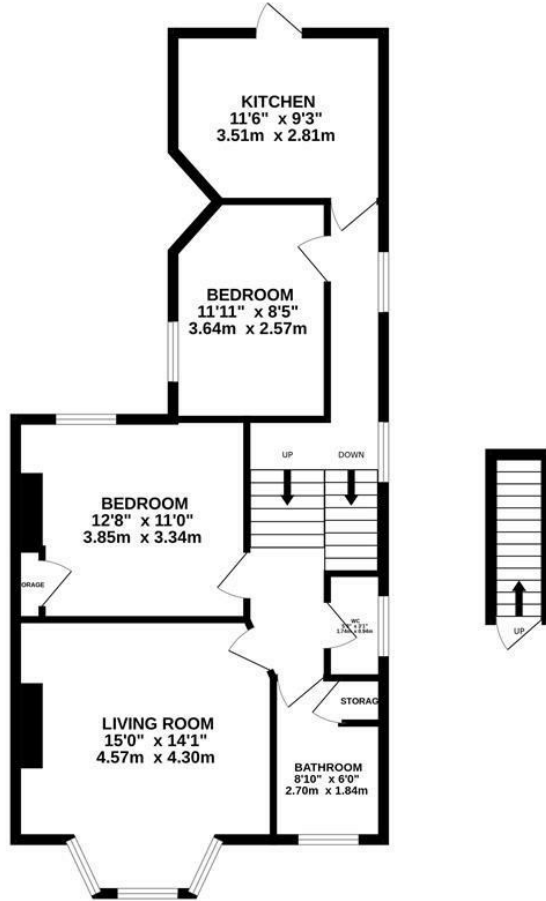
Ashburnham Road, Hastings TN35 5LL

Offers in excess of £195,000



A spacious TWO BEDROOM GARDEN APARTMENT positioned on the first floor of this period building, located in a sought after Clive Vale setting. It's enviably positioned for easy access to Hastings Old Town, Hastings Country Park and nearby primary schools. The accommodation here is arranged as a BAY FRONTED LIVING ROOM with a front aspect, whilst the fitted kitchen is positioned at the rear of the property and benefits from access to the ENCLOSED GARDEN. There are two DOUBLE BEDROOMS, with the primary enjoying BUILT-IN STORAGE, together with a bathroom benefitting from a bath and shower over, plus a separate W/C. Externally the garden enjoys RAISED DECKING followed by an EXPANSE OF LAWN, creating the perfect spot to DINE AL FRESCO. Being sold with no onward chain this fantastic property would make the PERFECT FIRST HOME and is not one to be missed.

FIRST FLOOR
736 sq.ft. (68.4 sq.m.) approx.



TOTAL FLOOR AREA : 736 sq.ft. (68.4 sq.m.) approx.

Whilst every attempt has been made to ensure the accuracy of the floorplan contained here, measurements of doors, windows, rooms and any other items are approximate and no responsibility is taken for any error, omission or mis-statement. This plan is for illustrative purposes only and should be used as such by any prospective purchaser. The services, systems and appliances shown have not been tested and no guarantee as to their operability or efficiency can be given.
Made with Metropix ©2025

